

No 68

*Presto affai, Allegato e con passione*

*Aloud*

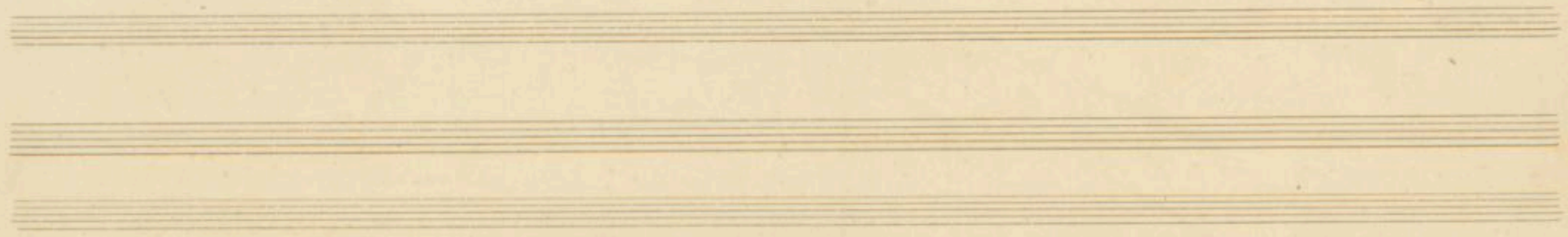
*Piano* *p*

This system contains two staves of handwritten musical notation. The upper staff is marked 'Aloud' in red and features a vocal line with a treble clef, a key signature of two sharps (F# and C#), and a 2/4 time signature. The lower staff is marked 'Piano' in red and features a piano accompaniment with a bass clef, the same key signature and time signature. The piano part begins with a red 'p' dynamic marking. Both staves contain several measures of music, with the piano part showing a rhythmic pattern of eighth and sixteenth notes.

*Sempre Cres*

This system continues the musical notation from the first system. It consists of two staves. The upper staff continues the vocal line, and the lower staff continues the piano accompaniment. The piano part includes a red 'cres' marking, indicating a crescendo. The notation is consistent with the first system, maintaining the same key signature and time signature.

Four empty musical staves are located at the bottom of the page, arranged in two pairs. They are not filled with any notation.



*f* *sempre f*

