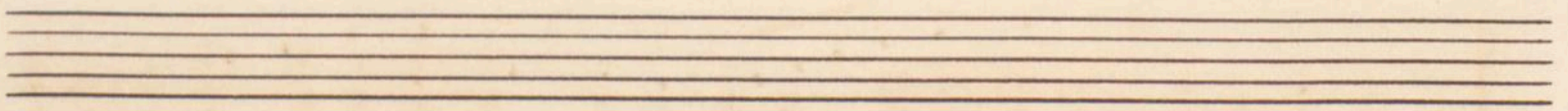
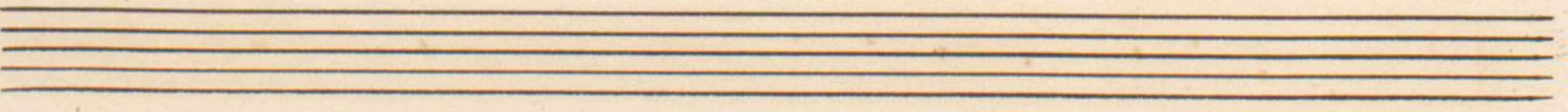


175 "Fun-tum er-gi"



Musica

Soprano 1^a *p* *f* *p*
 tan-tum er-gi sa-va-men-tum Ve-ne

Soprano 2^a
 tan-tum er-gi sa-va-men-tum

Tenor
 tan-tum er-gi sa-va-men-tum

Basso
 tan-tum er-gi sa-va-men-tum

Organo
Piano *p* *ma strom*

Cres - *f* *p*

re mur ve ne re mur ur nu i Et an

ve ne re mur ur nu i Et an

ve ne re mur ve ne re mur ur nu i Et an

ve ne re mur ve ne re mur ur nu i Et an

Cres *f*

Accompaniment for the first system, featuring chords and melodic lines in both hands.

f

ti quum de us mentum Novy u dat Novy u dat

ti quum de us mentum Novy u dat no vo

ti quum de us men tum no vo

ti quum de us men tum no vo u dat

f *Dim*

Accompaniment for the second system, ending with a *Dim* marking.

ri-tu - i

ce-dat ri-tu - i

ce-dat ri-tu - i

ri-tu - i

Præ-sert

Præ-sert fides sup-ple-mentum

Præ-sert fides sup-ple-mentum

Præ-sert fides sup-ple-mentum

fides sup-ple-mentum

Præ-sert fides sup-ple-mentum

re-fu-tu-i ge-mi-to-ri ge-mi-

re-fu-tu-i ge-mi-to-ri ge-mi-

re-fu-tu-i ge-mi-to-ri ge-mi-

re-fu-tu-i ge-mi-to-ri ge-mi-

p

to-que ge-mi-to-ri Lau-et ju-vi-la-ti-o

to-que Lau-et ju-vi-la-ti-o

to-que ge-mi-to-ri Lau-et ju-vi-la-ti-o

to-que ge-mi-to-ri Lau-et ju-vi-la-ti-o

Salus ho-nor vir-tus que — *que Sit et Be-ne-*

Salus ho-nor vir-tus que — *que vir-*

Salus ho-nor vir-tus quaque vir-tus que que vir-

Salus ho-nor vir-tus quaque vir-tus que que Sit —

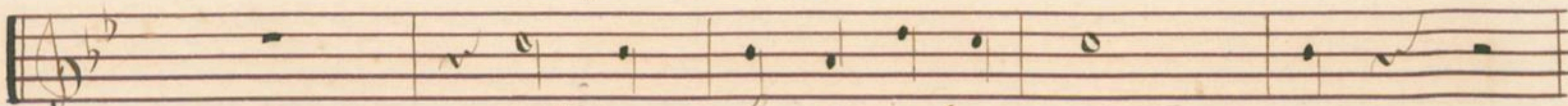
Sin-ti-o be-ne-dic-ti-o

tus quaque Sit et be-ne-dic-ti-o

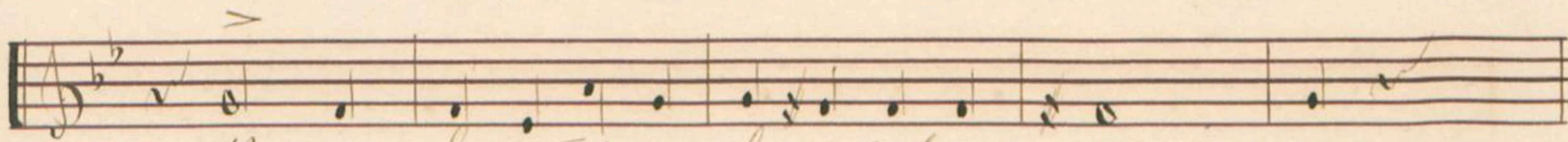
tus quaque Sit et be-ne-dic-ti-o *Pro u-*

et be-ne-dic-ti-o *Precedenti*

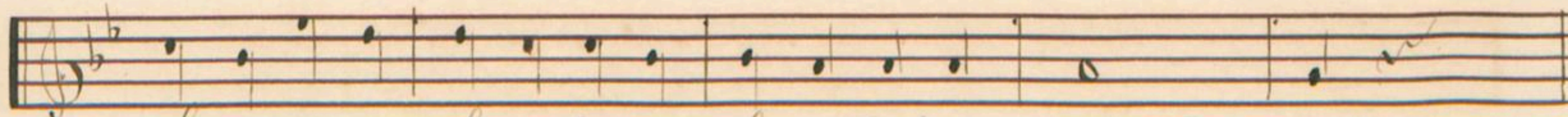
> *f* *v' cres* ----- *ff*



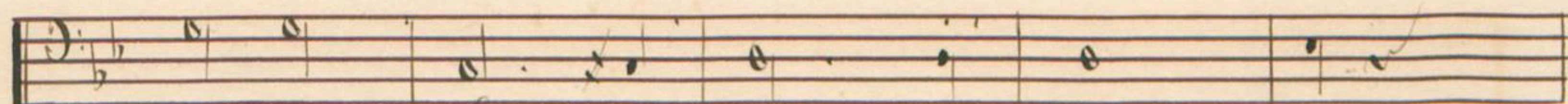
pro-ve-ni-ti ab u-tro-que



pro-ve-ni-ti pro-ve-ni-ti ab u-tro-que



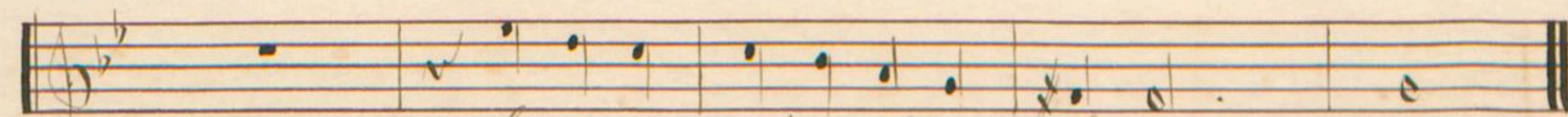
ve-ni-ti pro-ve-ni-ti pro-ve-ni-ti ab u-tro-que



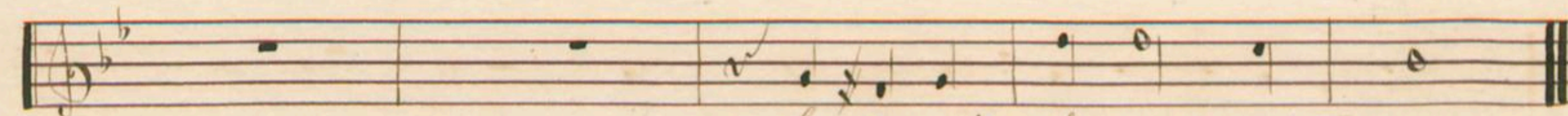
pro-ve-ni-ti ab u-tro-que



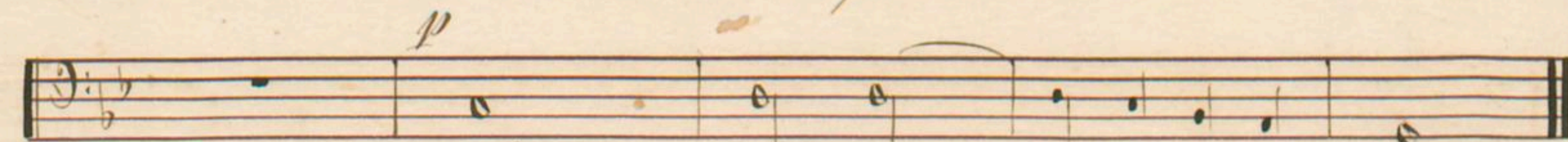
p Com-par sit lau-da-ti-o



Com-par sit lau-da-ti-o



Com-par sit lau-da-ti-o



p Com-par sit lau-da-ti-o

