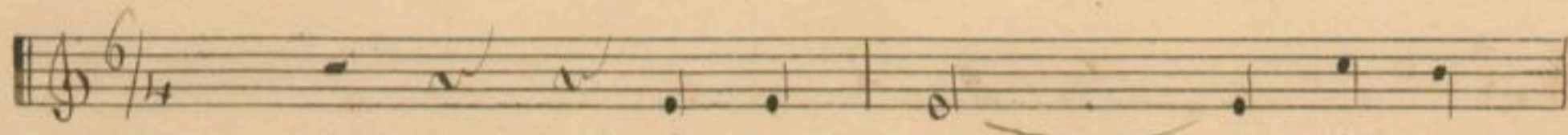


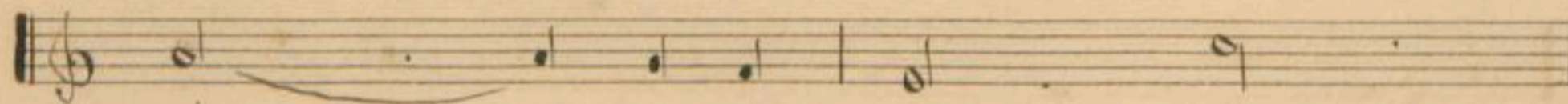
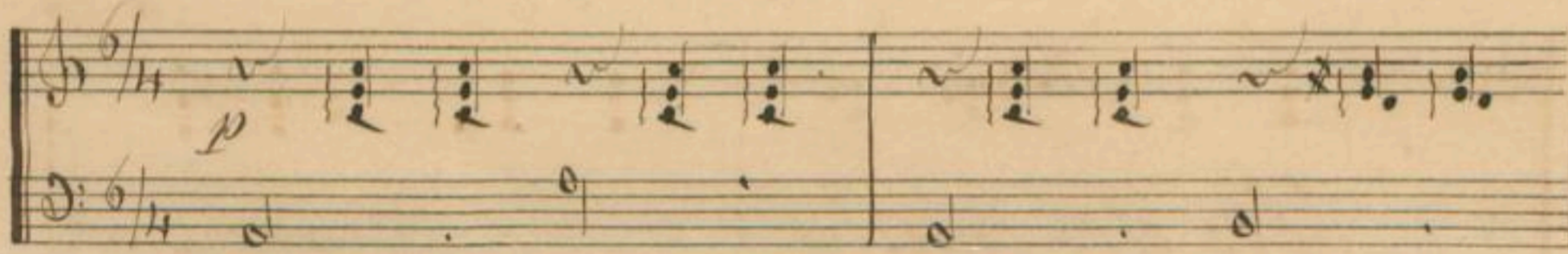
*Armonata*

*Poesia popular*

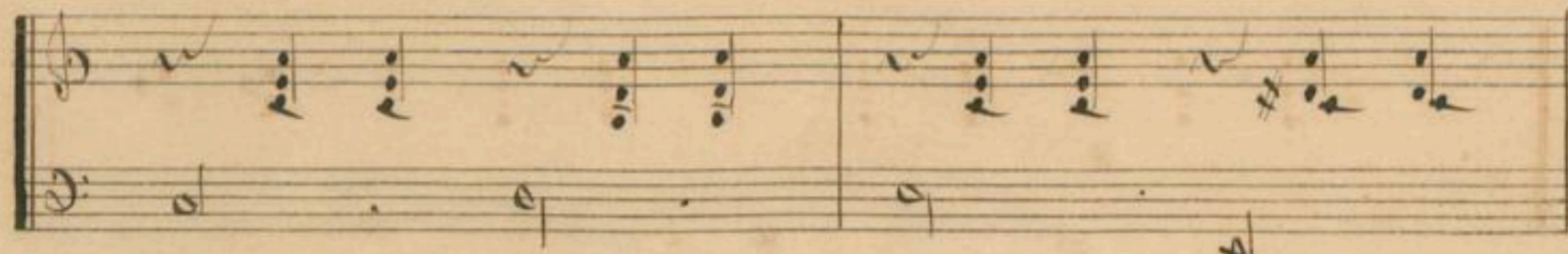
*Lento m m*



Un el cie lo la  
Una e tir ni clac



Lu na - ka - dian - te  
du ra la no - che



Handwritten musical notation for the first system. The vocal line (treble clef) contains the lyrics: *le ce pe-ro pro-n to se*. The piano accompaniment (bass clef) contains the lyrics: *tris te para el e mal mi*.

Handwritten musical notation for the second system. The vocal line (treble clef) contains the lyrics: *ve la de ne gras*. The piano accompaniment (bass clef) contains the lyrics: *ra do que llo ra y*.

Handwritten musical notation for the third system. The vocal line (treble clef) contains the lyrics: *me bes que al ver tu*. The piano accompaniment (bass clef) contains the lyrics: *gi me mien tras el*.

Handwritten musical notation for the fourth system. The vocal line (treble clef) contains the lyrics: *me bes que al ver tu*. The piano accompaniment (bass clef) contains the lyrics: *gi me mien tras el*.

Handwritten musical notation for the fifth system. The vocal line (treble clef) contains the lyrics: *me bes que al ver tu*. The piano accompaniment (bass clef) contains the lyrics: *gi me mien tras el*.

Handwritten musical notation for the sixth system. The vocal line (treble clef) contains the lyrics: *me bes que al ver tu*. The piano accompaniment (bass clef) contains the lyrics: *gi me mien tras el*.



za ———— dou  
me ———— ges

*Mit*

Ay! ———— nina

*p*

mi — a ———— dal — a — ver — re — ja

*p*

Mi — ra que en ve — no tu a — man tes es

pe — re ay! a — mo ni o

Ba — dian tes tre — lla tar — san za es

mus - te a - que - re - ra

Di - tu - no - vi - nes

mus - te me

das

Di - tu - no - vi - nes

Handwritten musical notation for the sixth system, featuring a vocal line and a piano accompaniment line.

Handwritten markings at the bottom of the page, including a stylized 'B' and the number '6'.

*f*

Muer — te me das

*f*

*f*

*Rit*

*f*

ya la

*Tempo 1<sup>mo</sup>*

*f*

no che es pa sa da

tu no nie nos bon tu in

gra To des vi o me



das le mer te

man de sa le He is pe

ran ga y de a mer no

*Allegretto*

rir me ha ces me

rir me ha ces

*Allegretto*

V. V.

Handwritten musical notation for the first system. The vocal line is on a single staff with a treble clef and a 6/8 time signature. The piano accompaniment is on a grand staff (treble and bass clefs). The lyrics are: *ly! mi - na mi - a Dal a na*

Handwritten musical notation for the second system, showing piano accompaniment. The vocal line is not present. The piano part features a complex texture with many sixteenth notes in the right hand and chords in the left hand. Dynamics include *f* and *p*.

Handwritten musical notation for the third system. The vocal line is on a single staff with a treble clef and a 6/8 time signature. The piano accompaniment is on a grand staff. The lyrics are: *re - ja mi - ra que en va - ro*

Handwritten musical notation for the fourth system, showing piano accompaniment. The vocal line is not present. The piano part continues with a complex texture of sixteenth notes and chords.

Handwritten musical notation for the fifth system. The vocal line is on a single staff with a treble clef and a 6/8 time signature. The piano accompaniment is on a grand staff. The lyrics are: *tu a - mante es - pe - ro ly a - mor*

Handwritten musical notation for the sixth system, showing piano accompaniment. The vocal line is not present. The piano part concludes with a final cadence.

mi - a Pa - drante es tri - ta

ta - ranza es muer - te a quin es

pe - ra si tu no - vies - nes

Muer Te me das Di Tu no

vi - nes Muer - Te me das

Di Tu no

Spini -

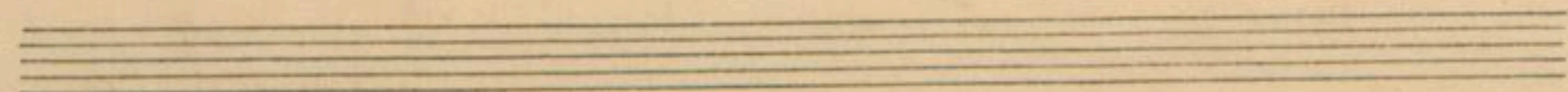
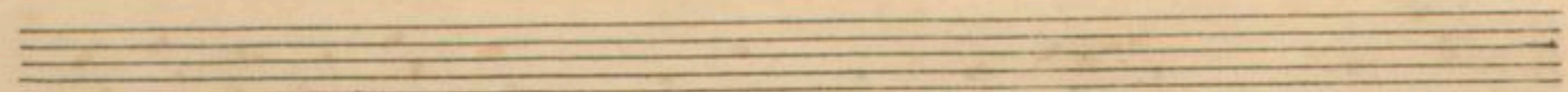
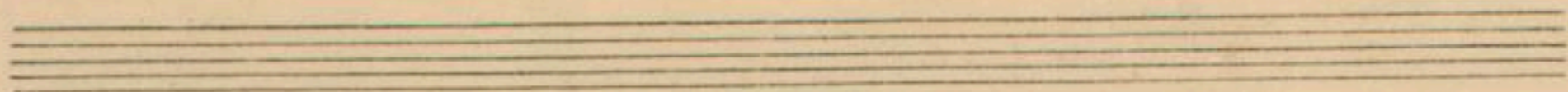
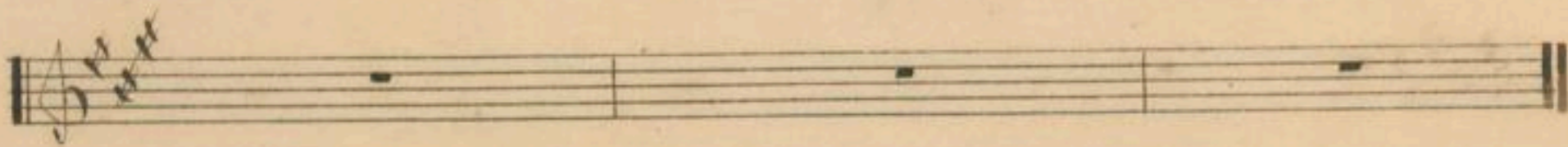
vi - nes

Muer - te me das Muer - te me

cas

Halt mit *pp*

U. S.



*cord*

