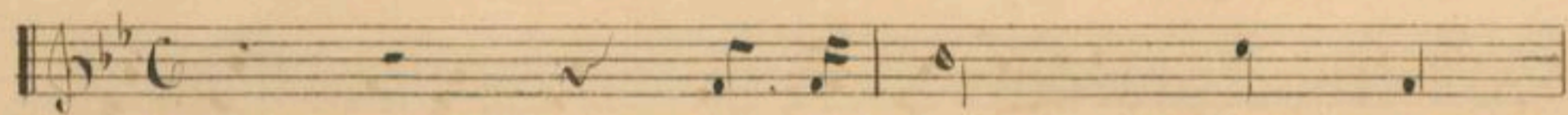
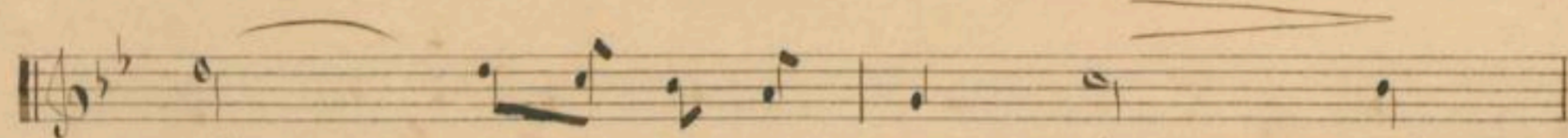


"Au patrie absente"

Animato



Vou-ve-nir du jeune
Des nos bois le si-



à ————— ge sont gra- ves dans mon
— len ————— le Les brds d'un clair ruis



Musical notation for the first system. The vocal line (treble clef) contains the lyrics: "Et je pense au vil". The piano accompaniment (bass clef) contains the lyrics: "La paix et l'in-".

Musical notation for the second system. The vocal line (treble clef) contains the lyrics: "ceur". The piano accompaniment (bass clef) contains the lyrics: "ceur".

Musical notation for the third system. The vocal line (treble clef) contains the lyrics: "la que pour ré- ver pour ré- ver le bon". The piano accompaniment (bass clef) contains the lyrics: "ceur ce Les en- fants Les en- fants que he-".

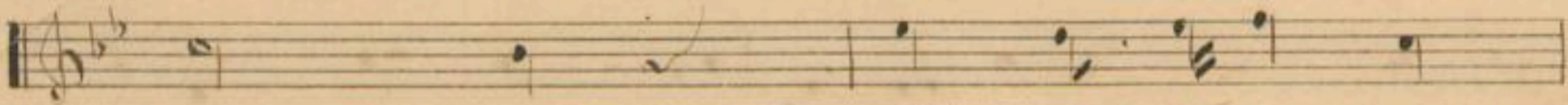
Musical notation for the fourth system. The vocal line (treble clef) contains the lyrics: "heur". The piano accompaniment (bass clef) contains the lyrics: "meau".

Musical notation for the fifth system. The vocal line (treble clef) contains the lyrics: "Ah! ma veix vous sur-". The piano accompaniment (bass clef) contains the lyrics: "Ah! ve- la mon in-".

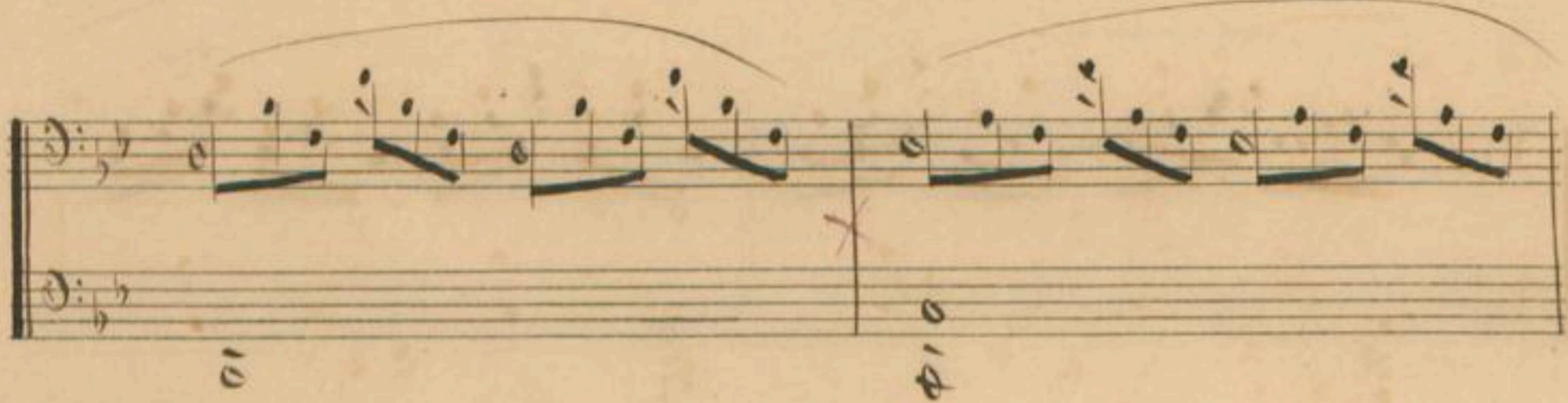
Musical notation for the sixth system. The vocal line (treble clef) contains the lyrics: "meau". The piano accompaniment (bass clef) contains the lyrics: "meau".

con

es



pli *e* *L'e* *con* *ter* *mon* *de*
vi *e* *vi* *ta* *mon* *seul* *de*

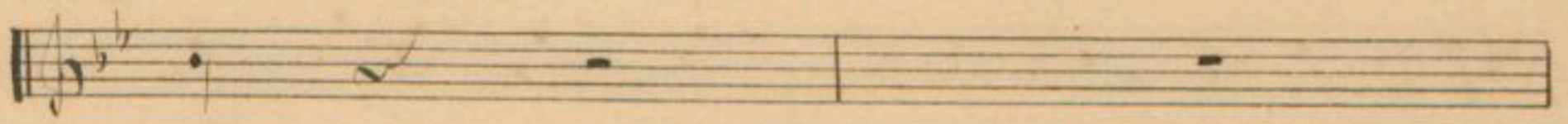


f *con* *passion*
vir *Ben* *de* *z* *moi* *ma* *pa*
vir



And
tri *e* *Qu* *lais* *sez* *moi* *mon*





rit

